

Bwindi Tree Nursery Project: 2025 Annual Report



The Bwindi Tree Nursery Project operated well in 2025. We have improved our techniques for germinating and maintaining the pine seedlings over the past few years such that we are having much better success. From January – December 2025, we distributed 24,295 pine, 1,795 lemon, and 1,676 indigenous (*Ocotea* and *Prunus*) seedlings to 653 households in six villages neighboring Bwindi. Another 43,000 seedlings are growing in the nursery (planted in April and June 2025) that will be distributed in early 2026. We continue to purchase the indigenous seedlings from the Institute of Tropical Forest Conservation and the lemon seedlings from a nursery in Kabale. We cannot germinate more pine seedlings in our nursery bed due to limitations of space. If we continue with the current planting and growing scheme, we should be able to distribute approximately 35-45,000 seedlings per year.

We had similar success in 2025 to 2024, with both years having a large improvement over the first two years of the project.

Table 1. Tree distributions from 2022 – 2025.

Year	Households	Pines	Lemons	Indigenous
2022	111	3029	415	416
2023	169	6090	358	454
2024	466	25266	872	963
2025	653	24335	1695	1576
TOTAL	1399	58720	3340	3409

Figure 1. Distribution of villages benefited by the project since 2022. Katunda, Kyikome and Gweyongezo are planned to receive tree in the future distributions.

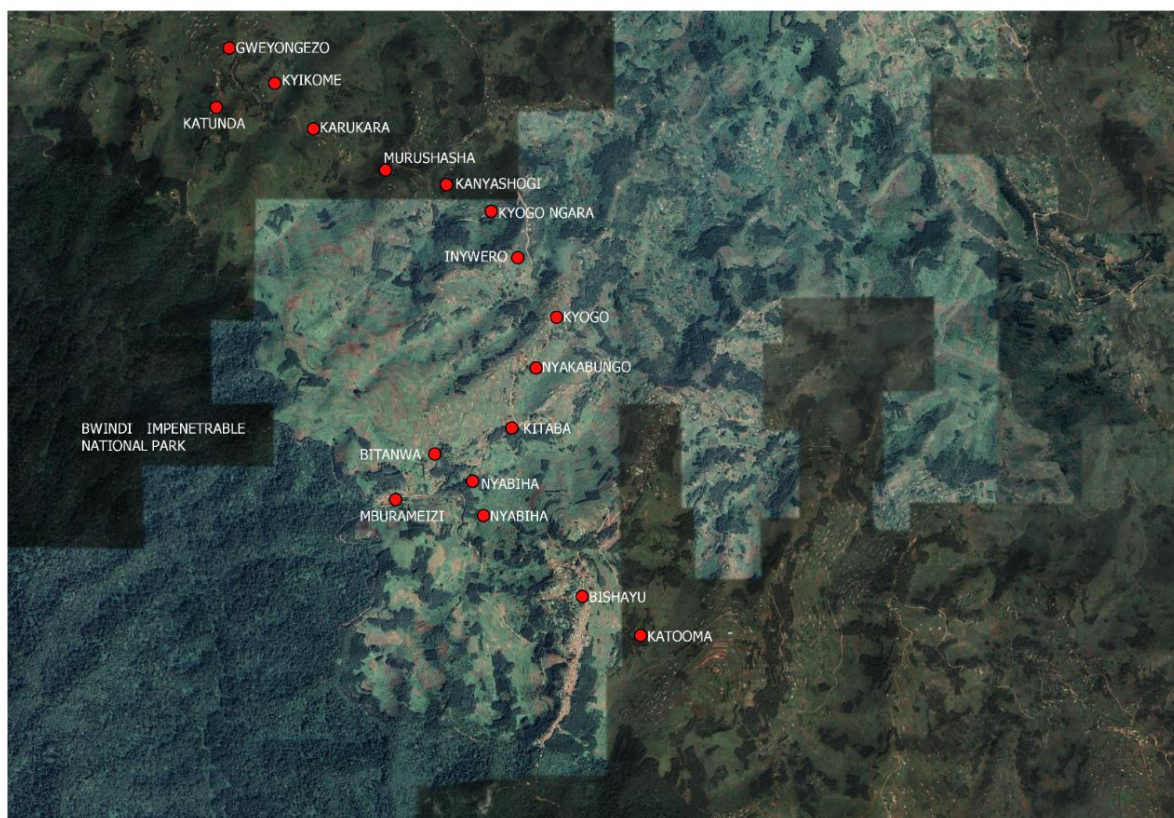


Table 1. Villages benefited from the tree distributions since 2022.

LC1	Date	# Households	# Pines	# Lemons	# Indigenous Seedlings
Bishayu	28-Nov-22	111	3029	415	416
Katooma	29-Apr-23	84	2850	140	264
Nyabiha	28-Oct-23	85	3240	218	190
Mburameizi	13-Jan-24	93	3570	93	184
Buzaniiro	20-Jan-24	72	3359	144	144
Bitanwa	27-Apr-24	61	4040	155	155

Bishayu	7-Sep-24	68	2610	136	136
Katooma	14-Sep-24	65	3200	130	130
Kitaba	28-Dec-24	46	4090	92	92
Nyakabungo	28-Dec-24	61	4397	122	122
Inyweru	4-Jan-25	69	2820	138	138
Kyogo	4-Jan-25	89	2965	178	178
Kyogo Ngara	27-Jan-25	108	4610	237	237
Kanyashogi	12-May-25	158	6500	482	482
Murushasha	22-Oct-25	126	5200	500	381
Karukara	14-Nov-25	103	2240	260	260
TOTAL		1399	58680	3440	3509

2. Activities & Progress (Jan - December 2025)

2.1 Seedling Inventory & Status

- At the beginning of 2025 there were an estimated 22,485 pine seedlings in the nursery, remaining from the 2024 planting session.
- To date, in 2025 a total of 24335 (pines) were distributed in a total of 6 villages, benefiting a total of 653 households.
- A total of three tree distributions were made in January 2025, including the following villages: Inyweru, Kyogo and Kyogo Ngara LC1s.
- A fourth tree distribution was performed at Kanyashogi village in May 12th.
- A fifth tree distribution was done in October 2025 at Murushasha village.
- A Sixth tree distribution was done in November 2025 at Karukara village.

From the planting session done in April and June 2025, approximately 43,000 pines seedlings were produced. These seedlings will be ready for distribution during 2026.

We have plans to distribute to five villages and four schools in 2026. These villages include Rukungwe, Kyikome, Katunda, Rweyogenzo, Rwesanziro and the 4 schools we work with for conservation education lessons.

Challenges for 2025:

We had 119 indigenous that were not taken by community members during distribution of Kanyashogi because most people in the communities don't like having indigenous trees grown on their farms. According to them, most of indigenous seedlings take very long to grow and most die because they are not accustomed to the environment outside the park.

There was a lot rainfall in 2025, that made the soil nutrients leak out of the bottom of the pots in which the seedlings were growing. This caused the seedlings to turn yellow, indicating that they were not growing properly. We had about 800 seedlings die due to this. To address this problem, we applied more animal manure, ash dust, super green and organic fertilizers as well as insecticides like Rocket. After we had applied all these, tree seedlings have started to recover and now most of them are green and growing well.

The tree nursery bed also needs rehabilitation. The poles that provide support to the nursery bed are getting old. Those that were used to make beds also need to be replaced because most of them are decaying.

3. Expenditures for 2025

Table 2: Expenditures (January 1 – December 31, 2025)

Category	Item	Shillings Spent (UGX)	Notes
Tree Distribution	Indigenous Seedlings	1,437,000	Procurement for Jan – May 2025 distributions
	Lemon Trees	2,562,000	Procurement for Jan – May 2025 distributions
	Transport (All Seedlings)	1,040,000	Incl. Pine, Lemon, Indigenous transport
	Porters (Distribution)	180,000	Labour for loading/distribution
	Lunch & Allowances	75,000	Operational costs during distribution
	Transport (General)	10,000	Minor related transport needs
	Subtotal	5,304,000	
Planting Session 1	Pine Seeds	250,000	Seed stock for the first 2025 planting

	Soil	280,000	For nursery beds and potting mix
	Manure and Ash	280,000	Soil enrichment
	Potting (Direct Labour)	648,400	Fees paid specifically for potting
	Porters (Support Labour)	390,000	Assistance with materials, potting
	Subtotal	1,858,400	
Planting Session 2	Pine Seeds	250,000	
	Subtotal	250,000	
Usual Expenses	Salary (Jan, Feb, Mar)	1,800,000	Based on 600k UGX monthly rate; 2 people
	Land Rent	500,000	Annual rent paid
	Boots	60,000	Work boots for staff
	Subtotal	2,360,000	
Planting Session 2	Soil	140,000	
	Sand	180,000	
	Pine Seeds	250,000	
	Manure and Ash	380,000	
	Potting (Direct Labour)	496,000	
	Porters (Support Labour)	912,000	
	Subtotal	2,298,000	
Tree Distribution	Indigenous Seedlings	641,000	
	Lemon Trees	2,597,000	
	Transport (All	850,000	

	Seedlings)		
	Porters (Distribution)	170,000	
	Lunch and Allowances	60,000	
	Chairman LC1	20,000	Mobilization allowance
	Transport (General)	60,000	Fuel for Mathias
	Subtotal	4,398,000	
Usual Expenses	Salary (May - Dec)	4,800,000	8 months * 600k UGX/month
	Maintenance/Co nsumables	191,500	Estimated annual need based on projection
	Subtotal	4,991,500	
TOTAL		21,449,900	

Expected budget for 2026

Below is the expected budget for tree project 2026. This includes distributing seedlings that have been planted in April and June 2025 and their transport costs. This distribution will cover 1229 households in 5 villages and 4 primary schools. The 4 schools will only get pine and lemon seedlings.

Table 3: Expected budget 2026 Tree Nursery Project

Items	Expected cost
Number of Lemons (2538 seedlings each at shs.3500) for 1229 households, 80 lemon seedlings for 4 schools	8,883,000
Indigenous (2458 seedlings each at shs.1000)	2,458,000
Transport for Lemons from Kabale to Ruhija	1,250,000
Transport for all seedlings from Ruhija to the villages	1,450,000
Lunch Allowance for MPI Staff	150,000
Pine seeds from Kampala (1KG)	560,000
Manure, sand, soil, and their transport	1,400,000

Ash	150,000
Pots and their transport from Mbarara to Ruhija	1,050,000
Porters	2,500,000
Fungicide	200,000
Rehabilitation Poles and transport	470,000
Labor for rehabilitation	100,000
Nails to use during rehabilitation	52000
Land Rent	500,000
Salary for Peter and Muhwezi	7,200,000
Unexpected cost	500,000
Total	28,423,000

Comments

There is an increase in the budget of 2026 compared to 2025 budget due to the following reasons;

1. In 2025, we distributed seedlings to 653 households and in 2026 we expect to distribute to 1229 households and 4 schools hence increasing budget. Purchasing and additional 1,150 lemon seedlings will cost roughly 4 million shillings (more than 1000 euros).
2. Some of the villages we distributed in 2025 were close to the nursery bed and so there was no transport for the truck involved to carry the seedlings. All households for 2026 are far from the nursery bed hence requiring more money for transporting seedlings. The truck transport will cost shs 1,200,000 for the five villages and 4 schools.
3. We are also rehabilitating the nursery bed in 2026 which requires more money and it will cost shs 622,000.
4. Most people like lemon seedlings compared to indigenous seedlings. We should discuss whether it is worthwhile to continue distributing them.